



**Dorset
Council**

**Public Path Diversion
and
Definitive Map and Statement Modification Order**

**Highways Act 1980
Wildlife and Countryside Act 1981**

**Dorset Council (Part of Footpath 13, Stoke Abbott at Brimley Mill)
Public Path Diversion Order 2025**

This Order is made by Dorset Council ("the authority") under section 119 of the Highways Act 1980 ("the 1980 Act") because it appears to the authority that in the interests of the owners of the land crossed by the footpath described in paragraph 1 of this Order it is expedient that the line of the path should be diverted.

This Order is also made under section 53A(2) of the Wildlife and Countryside Act 1981 ("the 1981 Act") because it appears to the authority that the County of Dorset definitive map and statement require modification in consequence of the occurrence of an event specified in section 53(3)(a)(i) of the 1981 Act, namely, the diversion (as authorised by this Order) of a highway shown or required to be shown in the map and statement.

Helen Arvanitakis and Tom Steel have agreed to defray any compensation which becomes payable in consequence of the coming into force of this Order and any expenses which are incurred in bringing the new site of the path into a fit condition for use by the public.

Stoke Abbott Parish Council has been consulted as required by section 120(2) of the 1980 Act.

BY THIS ORDER:

1. The public right of way over the land situate at Stoke Abbott parish and shown by a bold continuous line on the map contained in this Order and described in Part 1 of the Schedule to this Order shall be stopped up after 7 days from the date of confirmation of this Order or on the date which Dorset Council certify that work has been carried out to bring the site of the new highway mentioned in Part 2 of the Schedule to this Order into a fit condition for use by the public, whichever is the later and thereupon the County of Dorset definitive map shall be modified by deleting from it that public right of way.
2. Notwithstanding this Order, where immediately before the date on which the path is diverted in pursuance of this Order, there is apparatus under, in, on, over, along or across the path belonging to the statutory undertakers for the purpose of carrying out their undertaking then such undertakers shall continue to have the same rights in respect of their apparatus as they would have had if this Order had never been made.
3. There shall at the end of 7 days from the date of confirmation of this Order be a public footpath over the land situate at Stoke Abbott parish described in Part

2 of the Schedule to this Order and shown by a bold broken line on the map contained in this Order and thereupon the County of Dorset definitive map shall be modified by adding that path to it.

4. The rights conferred on the public under this Order shall be subject to the limitations and conditions set out in Part 3 of the Schedule to this Order
5. The County of Dorset definitive statement shall be modified as described in Part 4 of the Schedule to this Order.

SCHEDULE

(The points specified relate to the map attached to the Order and their positions are identified by national grid references)

Part 1

Description of site of existing path

Footpath 13, Stoke Abbott:

A – B The full width of the path from its junction with Footpath 14 and Footpath 37 to the east of Brimley Farm Cottages at point A (ST 4461 0032), generally south east through fields and then through the garden of Brimley Mill and into a field then south east to its junction with Bridleway 12 and the unaffected part of Footpath 13 to the south east of Brimley Mill at point B (ST 4499 0016).

(No recorded width)

Part 2

Description of site of new path

Footpath 13, Stoke Abbott:

F – E – D From its junction with Footpath 14 and Restricted Byway 46 at point F (ST 4512 0031) generally south west along the track between Brimley Mill and Higher Farm to point E (ST 4507 0023) then continuing generally south west then west south west along the track to point D (ST 4500 0019), where it enters a field and then runs south west via point C (ST 4500 0018) to its junction with Bridleway 12 at point B (ST 4499 0016).

Width: 2 metres except at points C (ST 4500 0018) and D (ST 4500 0019) – pedestrian gates to BS5709:2018

Part 3

Limitations and Conditions

To BS5709:2018:

Point C	(ST 4500 0018)	Pedestrian gate
Point D	(ST 4500 0019)	Pedestrian gate

Part 4

Modification of Definitive Statement

Variation of particulars of path

Footpath 13, Stoke Abbott:

Delete:

From: 445003 To: 449999

Brimley Cottages via Brimley Mill to Netherbury parish boundary thence to North Bowood

Add:

From: ST 4512 0031 To: 449999

From its junction with Footpath 14 and Restricted Byway 46 at ST 4512 0031 generally south west along the track between Brimley Mill and Higher Farm to ST 4507 0023 then continuing generally south west then west south west along the track to ST 4500 0019, where it enters a field and then runs south west via ST 4500 0018 to its junction with Bridleway 12 at ST 4499 0016 then generally south west and south south east to Netherbury parish boundary thence to North Bowood
Width: 2 metres between ST 4512 0031 and ST 4499 0016 except at ST 4500 0018 and ST 4500 0019 – pedestrian gates to BS5709:2018. No recorded width between ST 4499 0016 and 449999.

Footpath 14, Stoke Abbott:

Delete:

From: 446003 To: ST 45120031

From its junction with Footpaths 37 and 13 at Brimley Cottages, generally east to ST 45110030, south west of Higher Farm, then north east, along a tarmac surfaced path to its junction with Restricted Byway 46. Width: 7 metres between ST 45120031 and ST 45110030. Limitations: Field gates at ST 45120031 and ST 45110030.

Add:

From: 446003 To: ST 45120031

From its junction with Footpath 37 at Brimley Farm Cottages, generally east to ST 45110030, south west of Higher Farm, then north east, along a tarmac surfaced path to its junction with Restricted Byway 46 and Footpath 13. Width: 7 metres between ST 45120031 and ST 45110030. Limitations: Field gates at ST 45120031 and ST 45110030.

Restricted Byway 46, Stoke Abbott:

Delete:

From: ST 45130033 To: ST 45120031

From its junction with the C77 road at Higher Farm, south west along a tarmac surfaced path, passing to the west of farm buildings to its junction with Footpath 14. Width: 11 metres at ST 45130033, narrowing to 7 metres at ST 45120031.

Add:

From: ST 45130033 To: ST 45120031

From its junction with the C77 road at Higher Farm, south west along a tarmac surfaced path, passing to the west of farm buildings to its junction with Footpaths 13 and 14. Width: 11 metres at ST 45130033, narrowing to 7 metres at ST 45120031.

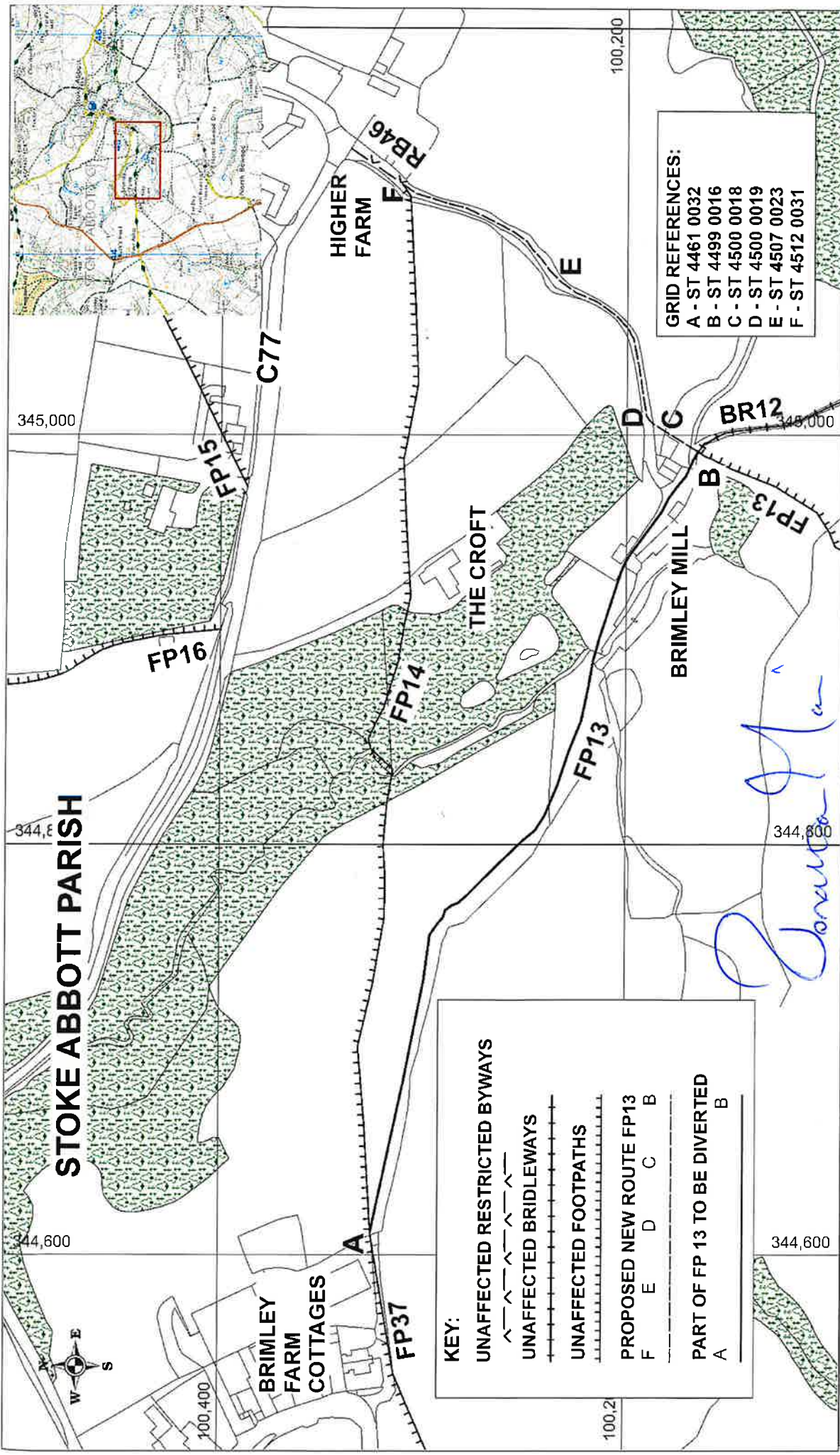
Dated this 25th day of APRIL 2025

THE COMMON SEAL of
DORSET COUNCIL
was affixed in the presence of:-



Authorised signatory

318125



**Dorset Council (Part of Footpath 13, Stoke Abbott at Brimley Mill)
Public Path Diversion Order 2025**

Ref: P267/25/2
 Date: 23/04/2025
 Scale: 1:2500
 Drawn by: CAM
 Cent X: 344,857
 Cent Y: 100,300



Dorset Council

© Crown copyright and database rights 2025
 OS 0100060863. Aerial Photography ©
 UK Perspectives 2002 & © Geimapping 2005, 2009
 & 2014, © Geimapping Plc and Bluesky International
 Limited (2017 onwards)

